

BETTLES, MILES & HOLLAND

Estate Agents - Valuers

Registered Office: 15 SEAVIEW STREET, CLEETHORPES, NORTH EAST LINCOLNSHIRE, DN35 8EU

Telephone: (01472) 691455 / 698698

Email: info@bmhestateagents.co.uk

To view our Properties on the Internet:

www.bmhestateagents.com

www.rightmove.co.uk

www.onthemarket.com

www.zoopla.co.uk

PROPERTY FOR SALE

UNITS 18 TO 22 VALENTINE COURT, CLEETHORPES

PURCHASE PRICE £200,000 - NO CHAIN



VIEWING

By appointment with this office

COUNCIL TAX BAND

We believe the properties will be Band A

PURCHASE PRICE

£200,000

TENURE

The tenure of the property is Freehold and this is to be confirmed by solicitors



Find us on Facebook
BMH Estate Agents & Property Management Limited
Registered in England No. 4782567



UNITS 18 TO 22 VALENTINE COURT, CLEETHORPES

Nestled in the charming area of Valentine Court, Cleethorpes, this impressive house conversion with planning permission for a block of five town houses with communal parking and gardens.

Situated in the desirable location of Cleethorpes, residents will enjoy the benefits of a vibrant community, with local amenities, schools, and beautiful coastal attractions just a stone's throw away. This property is an exceptional investment opportunity, offering the chance to create a thriving residential living in a sought-after area.

Freehold parking space allocated to each property.

Drainage, water, gas and telecoms up to all individual properties.

The plans for the conversion are readily available, and the estimated costs for completion are approximately £180,000.

UNITS 18 TO 22 VALENTINE COURT, CLEETHORPES

FRONT

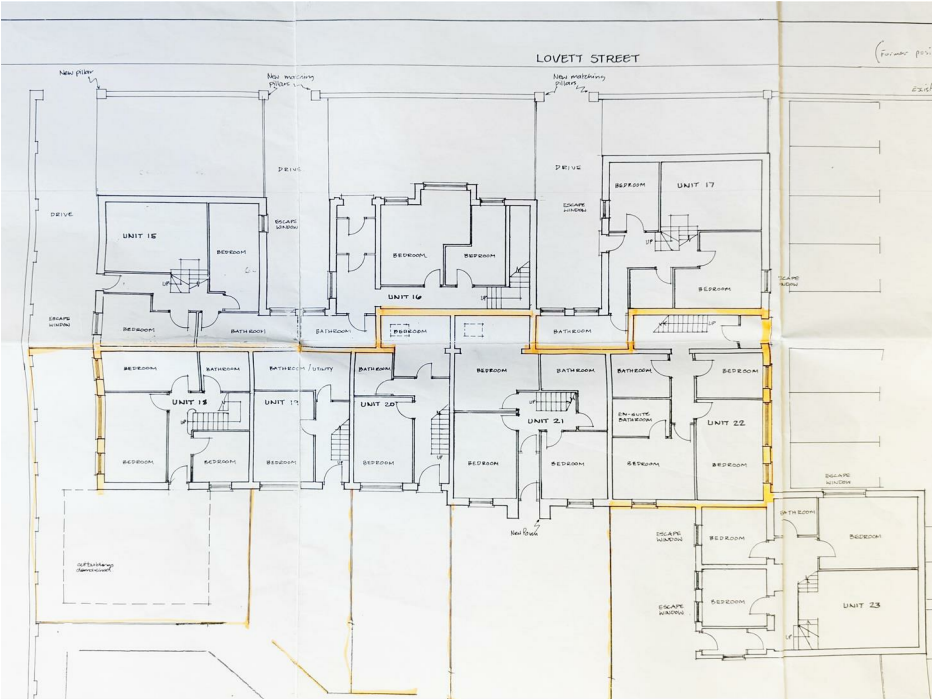


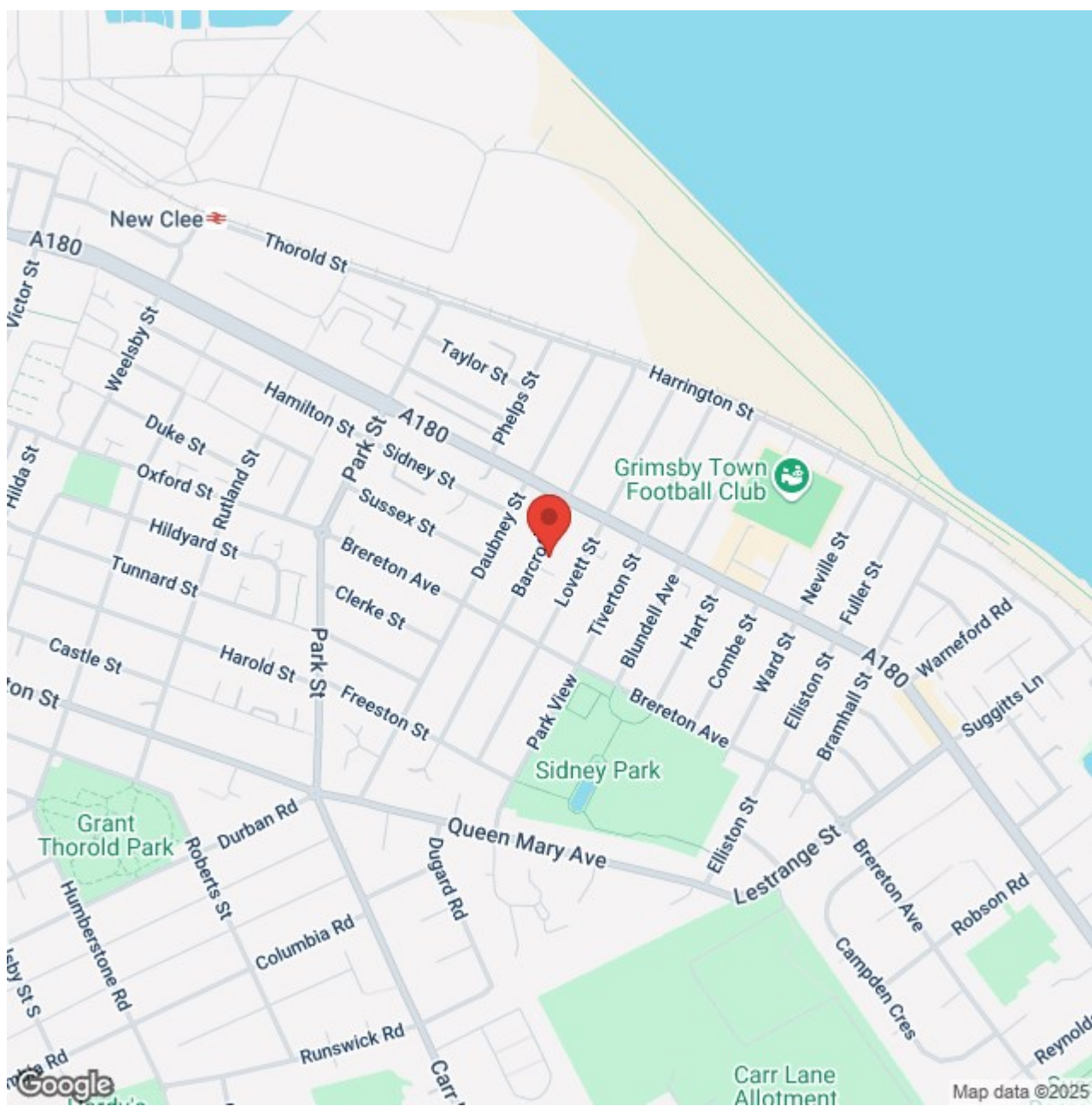
UNITS 18 TO 22 VALENTINE COURT, CLEETHORPES

PLANS



PLANS





ADDITIONAL NOTES

FREE VALUATIONS:

We offer a free valuation with no obligation, just call the office on 01472 698698 and ask for your free valuation, we are flexible with our times.

B.M.H. PROPERTY MANAGEMENT.

We offer a letting/management service:-

Four weekly payments / Regular inspections / credit checks / Our monthly fee is 12% **Inclusive of VAT** (i.e. 10% + V.A.T.) Call us if you are interested.

MORTGAGE ADVICE

WE CAN OFFER INDEPENDENT MORTGAGE ADVICE

Our local broker James Welham can help you find the best mortgage to suit you providing personal face to face expert advice either at our office or in the comfort of your own home.

Contact our office for further details on 01472 698698 or speak to James Welham directly on 07710 548 379 or james@jdwassociates.co.uk.

Bettles, Miles and Holland Estate Agents is an introducer to JDW Associates, which is an appointed representative of Lakeside Wealth Management Limited, which is authorised and regulated by the Financial Conduct Authority 458204.

YOUR HOME MAY BE REPOSSESSED IF YOU DO NOT KEEP UP REPAYMENTS ON YOUR MORTGAGE.

They normally charge a fee for mortgage advice. The amount will depend on your circumstances. A typical fee would be £99 payable upon application and further £300 payable on production of offer.

(BMH may recommend the services of James Welham JDW Associates but it is entirely sellers/potential buyers own decision to use the services and they are under no obligation to do so. BMH receive a referral fee/benefits worth £75 per mortgage completion. This has NO effect on the price sellers/potential buyers pay for the Mortgage Advice. It is purely an agreement between BMH and James Welham.)

STATUTORY NOTICE: YOUR HOME IS AT RISK IF YOU DO NOT KEEP UP REPAYMENTS ON A MORTGAGE OR OTHER LOAN SECURED ON IT.

*** ALL MEASUREMENTS STATED ARE APPROXIMATE.**

Please note that none of the apparatus, equipment, whether gas or electrical have been tested and that we cannot verify that they are in full working order. We have done our utmost to provide fair, decent and honest information, we will not accept liability for any errors regarding measurements, council tax band, tenure etc, as they are for your general use only and not to be relied upon. We advise that you make your own enquiries. Should a purchaser require inspections or quotes for works on a property due to survey results, although we are only too pleased to recommend firms, we will not be held responsible for any works carried out before or after completion, or works not detected by the firms in question, they are only recommendations and have no connection with Bettles, Miles & Holland